

# SCOUTING DON BOSCO MOOK LOGCABINS AND CAMPSITES



## CONTENTS

|                         |    |
|-------------------------|----|
| Mook                    | 3  |
| Campsite Herrendal      | 5  |
| Logcabin D'n Urste Kiek | 6  |
| Logcabin De Knollenberg | 8  |
| Regulations             | 10 |
| Important information   | 12 |
| Daytrips                | 14 |
| Recreation              | 16 |
| Siteplan                | 18 |
| Rental materials        | 18 |
| Watchtower              | 19 |

website: [www.herrendal.nl](http://www.herrendal.nl)  
[www.donboscomook.nl](http://www.donboscomook.nl)



## Mook

Scouting Don Bosco Mook is the owner of the label campsite “Herrendal” On the terrain there are two logcabins: ‘D’un Urste Kiek ’ and ‘de Knollenberg’, a watchtower en campsites. All these premises are situated on a 14 hectare terrain in Mook. Mook is the most northernly spot in the province of Limburg and is bordered by the communities Groesbeek and Heumen of the province of Gelderland, the community of Gennepe of the province Limburg and the river Maas, with the community Cuijk (in the province of Brabant) on the other side of the river. Mook is often called the Green Gateway to Limburg, including the famous touristwater-sport-and recreationarea “de Plasmolen”. Coming from Nijmegen, you drive a few kilometers to the South and you will pass this lovely gateway with on the one site the hilly landscape and on the other site the valley of the river Maas. On top of the hilly part is the Mookerhei (heather) and from there you have a beautiful view on the province of Brabant.

In the past one would wish ‘someone to go to the Mookerhei’ in a bad mood, but nowadays when people come to Mook they will enjoy the area of unspoiled nature and its magnificent views in the most northern part of Limburg: you will find an unique combination of woodlands, hills and water. The campsites, the logcabins and accommodations are situated near the ‘Mookerheide’ on the border of the extended woodlands. The village is but twohundred

meters from the accommodation. The campsite is provided with a complete toilet-, changing- and washroom with warm showers, attached to the sewer. Both of the logincabines, suited for 50 en 26 persons are equipped with modern facilities as gas, water, electricity and showers.

Around the cabins playing accommodation is available. At the border of the campsite there is a watchtower with a height of 15 meters. Standing on the tower you have a beautiful sight on the village Mook, the river Maas and the province of Brabant. Near to the watchtower a heatherpark with walkingpath is situated since 2003.



## CAMPSITE HERRENDAL

The site has become a label from Scouting Nederland.  
It's an area of 14 hectares and it's situated in the woods.  
It's provided with 4 campsites and scouts hikesites.  
In the center of the site there are toilets, showers and running water.

### *reservations*

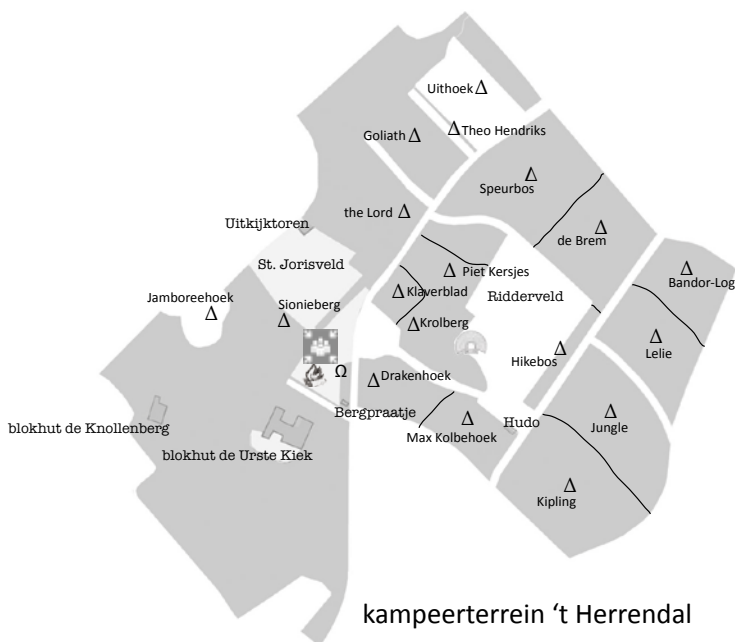
Frank van Rooij  
+31 24 845 8029

### *caretaker/manager*

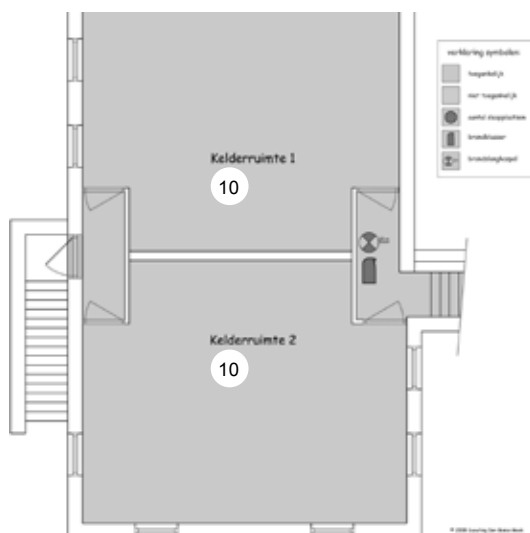
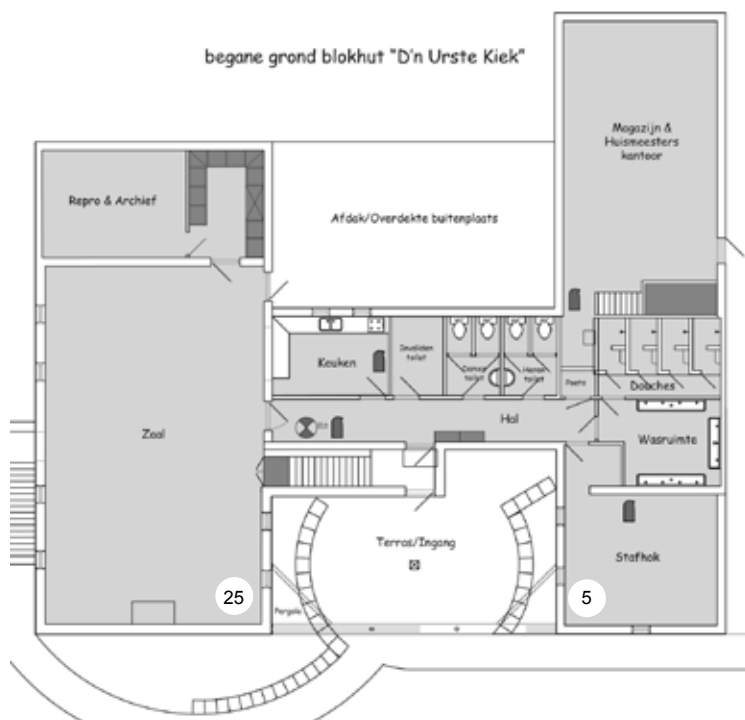
Jos Loeffen  
Lindeboom 213  
6585 BN Mook  
tel./fax: 024 - 696 1937  
gsm: 06 - 5392 6871

reservations: [www.herrendal.nl](http://www.herrendal.nl)

E-mail: [verhuur@herrendal.nl](mailto:verhuur@herrendal.nl)



kampeerterrein 't Herrendal



The number in the circle gives the maximum number of sleeping places.

## LOGCABIN D'N URSTE KIEK

Address: Avilaweg 15-17

This logcabin contents:

- a great room (25 sleepingplaces)
- a staffroom (5 sleepingplaces)
- a kitchen with refrigerator and gasstove
- a toilet for disabled persons with shower
- a toilet for men and women
- a washing accommodation with showers
- a covered terrace and playing accommodation with extra extension for up to 50 persons.

The accommodation is fit for 30 persons with extra extension for up to 50 persons. In the cellar there are 20 extra sleepingplaces divided over 2 rooms.

### *reservations*

Frank van Rooij  
+31 24 845 8029

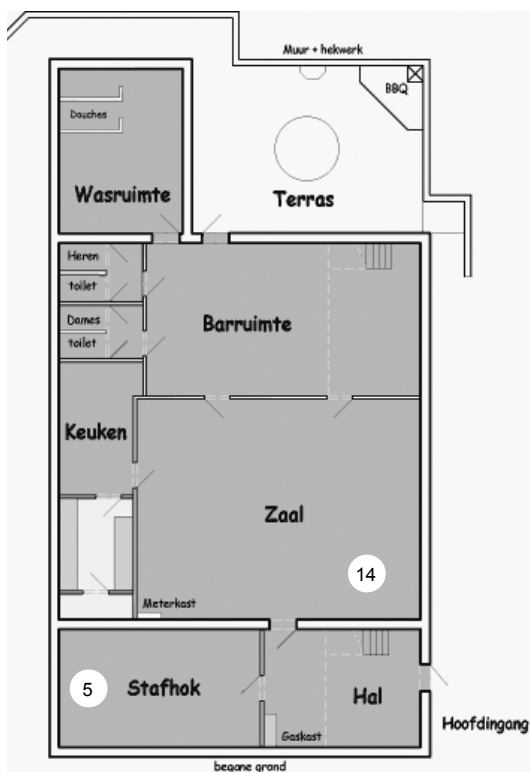
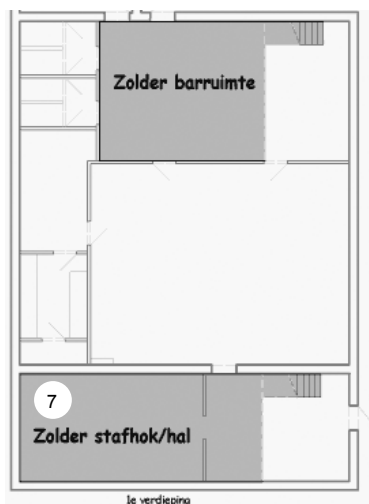
### *caretaker/manager*

Jos Loeffen  
Lindeboom 213  
6585 BN Mook  
tel./fax: 024 - 696 1937  
gsm: 06 - 5392 6871

reservations: [www.herrendal.nl](http://www.herrendal.nl)

E-mail: [verhuur@herrendal.nl](mailto:verhuur@herrendal.nl)





The number in the circle gives the maximum number of sleepingplaces.

## LOGCABIN DE KNOLLENBERG

Address: Avilaweg 19

The logcabin contents:

- a big room (14 sleepingplaces)
- a staffroom (5 sleepingplaces)
- a sleepingloft (7 sleepingplaces)
- a kitchen with refrigerator en gasstove
- womens- and menstoilet
- washing accommodation with showers.

The logcabin is fit for 26 persons.

### *reservations*

Frank van Rooij  
+31 24 845 8029

### *caretaker/manager*

Jos Loeffen  
Lindeboom 213  
6585 BN Mook  
tel./fax: 024 - 696 1937  
gsm: 06 - 5392 6871

reservations: [www.herrendal.nl](http://www.herrendal.nl)

E-mail: [verhuur@herrendal.nl](mailto:verhuur@herrendal.nl)



## REGULATIONS FOR LOGCABINS AND CAMPINGSITES..

1. When you arrive, please inform the manager. When you hire a logcabin, you will get the keys from him. When you are using a campsite, please leave a note in the postbox on arrival, in case the manager isn't available
2. You can reach both of the cabins only through the Avilaweg. Don't use any other road!
3. You have to park your cars on the marked spots .
4. The access road to the accommodations must be free at any time in cases of emergency.
5. Respect nature! Cherish trees, bushes and plants. Use paths and roads only;  
Other people like to enjoy nature as well.
- 6 Open fire (campfire etc.) is only allowed if permitted by the manager.
7. Take care of the local neighbours of our campsite. We would like them to stay scouting-minded. Mook must stay a place where scouting-groups are welcome in the future.
- 8 Please don't forget, the logcabins are near the living area of Mook. Don't make noise and music that can annoy the surrounding villagers. Especially in the evening sounds travel very far. After 23.00 p.m. it must be quiet on the campsite.
- 9 Check - before you leave the cabin – the lights, the fire in the fireplace and the gasstove. Is everything put out and clean? Close the shutters carefully please.
- 10 Leave the cabinlogs and campsites even cleaner than you found them when you came. Litter must be disposed in the litterbox on the center of the campsite.

11. You have to let the manager in at all times.
12. Animals are not allowed.
13. Use of the campsite: -Restricted digging – when you cook: on gasstoves only – Keep the toilets clean: everyones' responsibility. – respect other campsite-users.  
Don't walk over their site. –  
It's prohibited to attach garden hoses.
14. It's not allowed to connect electric cables without permission of the manager.
15. Destruction and damage to inventory, buildings, accommodation and sites must be reported immediately to the administrator/manager.  
The tenants will be charged for it.
16. It's not allowed to build up tents around the buildings, unless the manager has given permission to do so. He will charge extra costs.
17. In cases of misconduct or violation of the regulations, the board of Don Bosco has the right to remove persons immediately from the site. In addition they have the right to deny them access to the cabins or area without refund of the money paid.
18. Every group has to provide for their own celltelephone.
19. Log out before you go.
20. In all cases the regulations do not provide, the manager decides.

## IMPORTANT TO KNOW

|                               |   |
|-------------------------------|---|
| AED                           | There's an AED on the campingsite   |
| Pharmacy                      | Healthcenter De Mookerheide<br>Groesbeekseweg 5-7<br>6585 KE Mook<br>telephone: +31(0)24 - 696 3082       |
| Fire Department               | Alarmnummer 112   |
| Drugstore                     | DA Voordeel Drogisterij<br>Prinses Beatrixstraat 7, 6585 XN Mook<br>telephone: +31(0)24 - 696 3055        |
| Gen. Practitioner:            | Huisartsenpraktijk Molenhoek<br>Prinsenweg 6,<br>6584 AZ Molenhoek<br>telephone : +31(0)24 - 358 5060     |
|                               | Gezondheidscentrum De Mookerheide<br>Groesbeekseweg 5-7<br>6585 KE Mook<br>telephone: +31(0)24 - 696 3933 |
| General Practitioner Nijmegen | telephone 0900 - 8880   |
| Police                        | Alarmnumber 112 - emergency<br>not lifethreatening situations: 0900 - 8844                                |
| Postoffice                    | Mook; Prinses Beatrixstraat 17<br>6585 XN Mook<br>telephone: +31(0)24 - 696 2535                          |
|                               | Molenhoek; Prinsenweg 13;<br>6584 AZ Molenhoek<br>telephone: +31(0)24 - 358 4756                          |

## Dentist

R.P. van Rens  
Gen. Gavinstraat 33, 6585 WL Mook  
telephone: +31(0)24 - 696 2318

Praxis for dentistry Molenhoek  
Prinsenweg 35a, 6584 AZ Molenhoek  
telephone: +31(0)24 - 358 4445

## Tourist Information

Witteweg 10  
6586 AE Plasmolen  
telephone: +31(0)24 - 696 1762

## Shopping hours Mook

mo t/m sa 08.00 - 20.00 h  
su 10.00 - 19.00 h

Molenhoek  
mo t/m fr 08.00 - 20.00 h  
sa 08.00 - 17.00 h

## Hospital

Radboud UMC  
Geert Grooteplein-zuid 10  
6525 GA Nijmegen  
telephone: +31(0)24 - 361 1111

Canisius Wilhelmina Ziekenhuis (CWZ)  
Weg door Jonkerbos 100  
6532 SZ Nijmegen  
telephone: +31(0)24 - 365 7657

Maasziekenhuis Pantein  
Dokter Kopstraat 1  
5835 DV Beugen (Boxmeer)  
telefoon: +31 (0)485 - 845000

## DAYTRIPS

Afrika Museum Berg en Dal  
[www.afrikamuseum.nl](http://www.afrikamuseum.nl)

Dierentuin Zooparc Overloon  
[www.zooparc.nl](http://www.zooparc.nl)

Beekeeping Immenhof Heumen  
[www.imkerij-immenhof.nl](http://www.imkerij-immenhof.nl)

Museum Het Valkhof Nijmegen  
[www.museumhetvalkhof.nl](http://www.museumhetvalkhof.nl)

Museumpark Orientalis Heilig Landstichting  
[www.museumparkorientalis.nl](http://www.museumparkorientalis.nl)

De Bastei  
 Museum voor Natur en Culturhistory  
[www.debastei.nl](http://www.debastei.nl)

Natuurmonumenten / Forester Molenhoek  
[www.natuurmonumenten.nl/natuurgebieden/mookerheide](http://www.natuurmonumenten.nl/natuurgebieden/mookerheide)

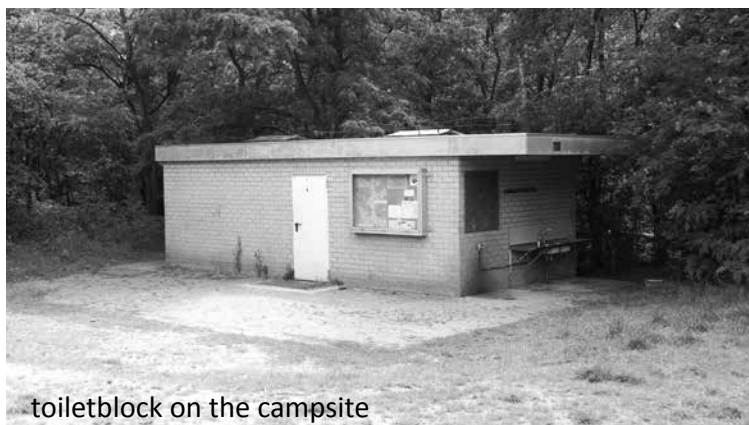
Oorlogsmuseum Overloon - (war museum)  
[www.oorlogsmuseum.nl](http://www.oorlogsmuseum.nl)

Pottery De Olde Kruyk  
[www.oldekruyk.com](http://www.oldekruyk.com)

Staatsbosbeheer Rijk van Nijmegen Zuid  
[www.staatsbosbeheer.nl/natuurgebieden/Rijk-van-nijmegen](http://www.staatsbosbeheer.nl/natuurgebieden/Rijk-van-nijmegen)

Velorama (nationaal fietsmuseum) Nijmegen  
National Bike museum  
[www.velorama.nl](http://www.velorama.nl)

Freedommuseum Groesbeek  
[www.vrijheidsmuseum.nl](http://www.vrijheidsmuseum.nl)



toiletblock on the campsite

## RECREATION

Bowlen                      Bowling Plasmolen / Restaurant het Zuiden  
*[www.bowling-plasmolen.nl](http://www.bowling-plasmolen.nl)*

Olround Nijmegen  
*[www.olroundnijmegen.nl](http://www.olroundnijmegen.nl)*

Canoe                      Outdoor Gennepe  
*[www.outdoorgennepe.nl](http://www.outdoorgennepe.nl)*

Crossbowshooting  
Schutterij St. Antonius Abt Mook  
*[www.schuttergildemook.nl](http://www.schuttergildemook.nl)*

Corn maze and playground  
Maisdoolhof Malden  
*[www.maisdoolhof.nl](http://www.maisdoolhof.nl)*

Midgetgolf                Golfhuisje Plasmolen  
*[www.golfhuisje.nl](http://www.golfhuisje.nl)*

Amusementparc  
Tivoli  
*[www.parktivoli.nl](http://www.parktivoli.nl)*

Indoor playground  
Binnenspeeltuin Pret-Inn Heumen  
*[www.pretinn.nl](http://www.pretinn.nl)*

Children playground  
Brakkefort Nijmegen  
*[www.brakkefort.nl](http://www.brakkefort.nl)*

De Leemkuil Nijmegen  
[www.deleemkuil.nl](http://www.deleemkuil.nl)

BillyBird park Hemelrijk Volkel  
[www.billybird.nl](http://www.billybird.nl)

Irrland  
[www.irrland.de](http://www.irrland.de)

## Swimmingpools

### Outdoor

De Grote Siep / Mookerplas/ beach  
[www.leisurelands.nl/recreatiegebieden/mookerplas](http://www.leisurelands.nl/recreatiegebieden/mookerplas)

Freizeitbad GochNess  
[www.gochness.de](http://www.gochness.de)

### Indoor

De Veldschuur Malden  
[www.laco.eu/locatie/malden](http://www.laco.eu/locatie/malden)

De Kwel Cuijk  
[www.laco.eu/locatie/cuijk](http://www.laco.eu/locatie/cuijk)

Het Heijderbos Heijen (Center Parcs)  
[www.centerparcs-nl/aqua-mundo](http://www.centerparcs-nl/aqua-mundo)

Pica Mare Gennep  
[www.yasklocaties.nl/pica-mare/](http://www.yasklocaties.nl/pica-mare/)

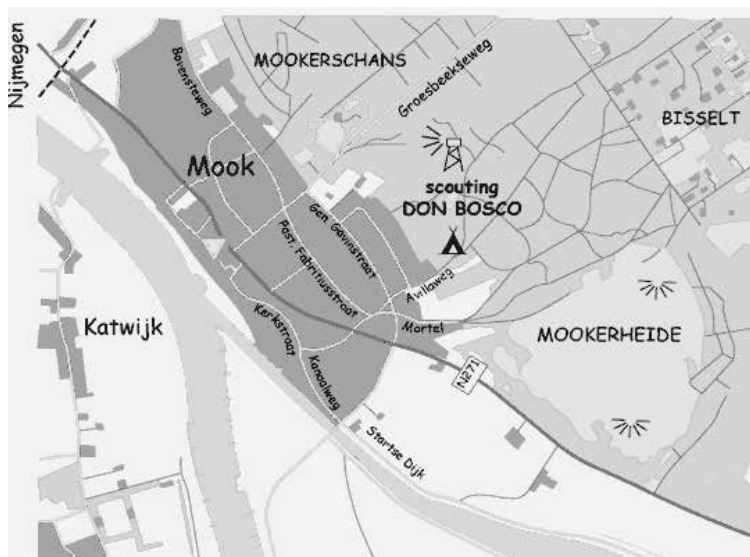
## RENTAL MATERIALS

You can rent some materials from Don Bosco at the campsite. The manager can help you out. For example: tents, pioneering wood, barbecue, heaters and a complete kitchenbox. We have a separate folder available on request.

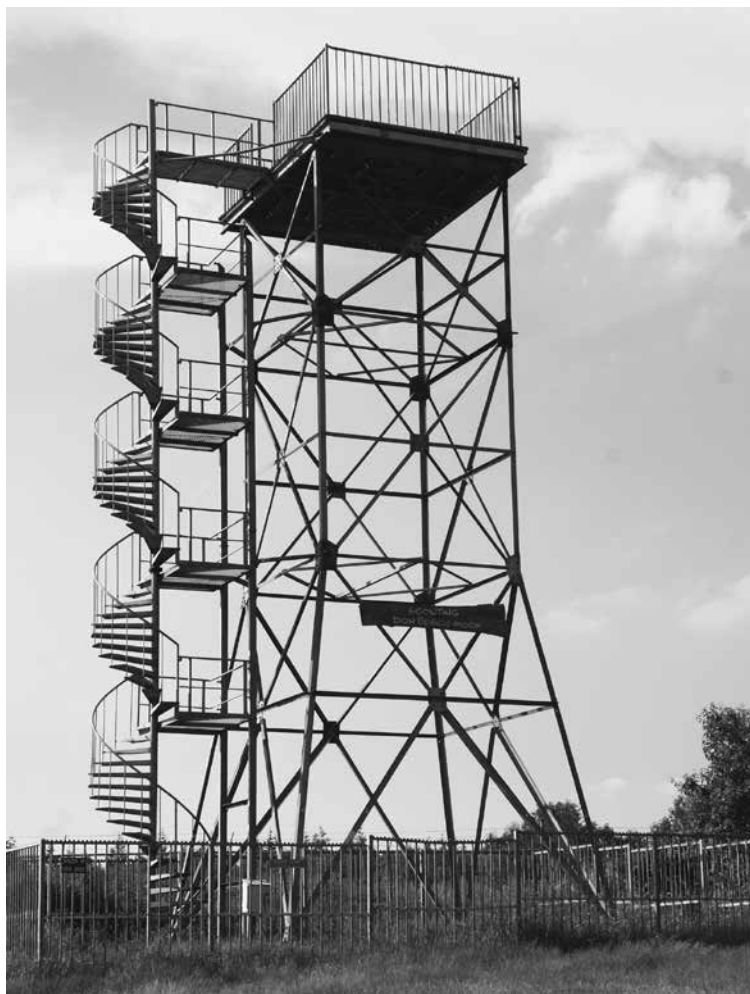
[herrendaloffice@gmail.com](mailto:herrendaloffice@gmail.com)

## SITEPLAN

Below you find a siteplan of the don Bosco campsite at the Avilaweg in Mook. On the highway N271 and on the Groesbeekseweg are brown signs with the inscription 'scouting' that show you the way. " .



## WATCHTOWER



The Don Bosco watchtower offers a panoramic view from the moraine, where the tower is located, on the eastern part of North Brabant. In good weather, the building of the provincial government of Den Bosch and the broadcasting tower of Megen are clearly visible. Entering the tower is only allowed in consultation with the caretaker/manager

Scouting Don Bosco Mook  
Avillaweg 15; 6585 KK Mook  
Rabobank Mook 14 NL14RABO0131614738